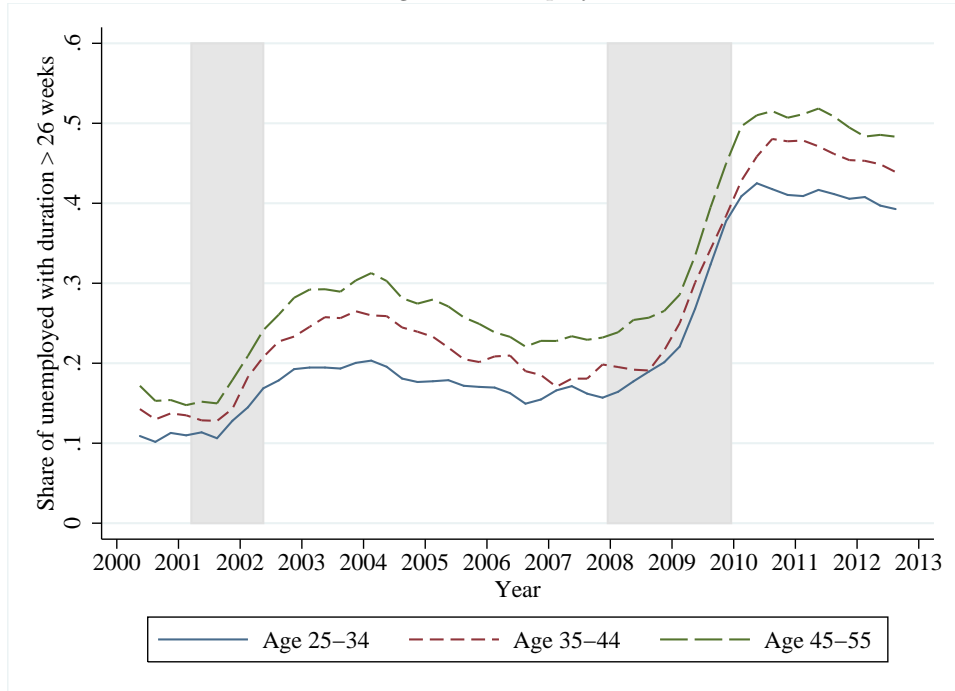
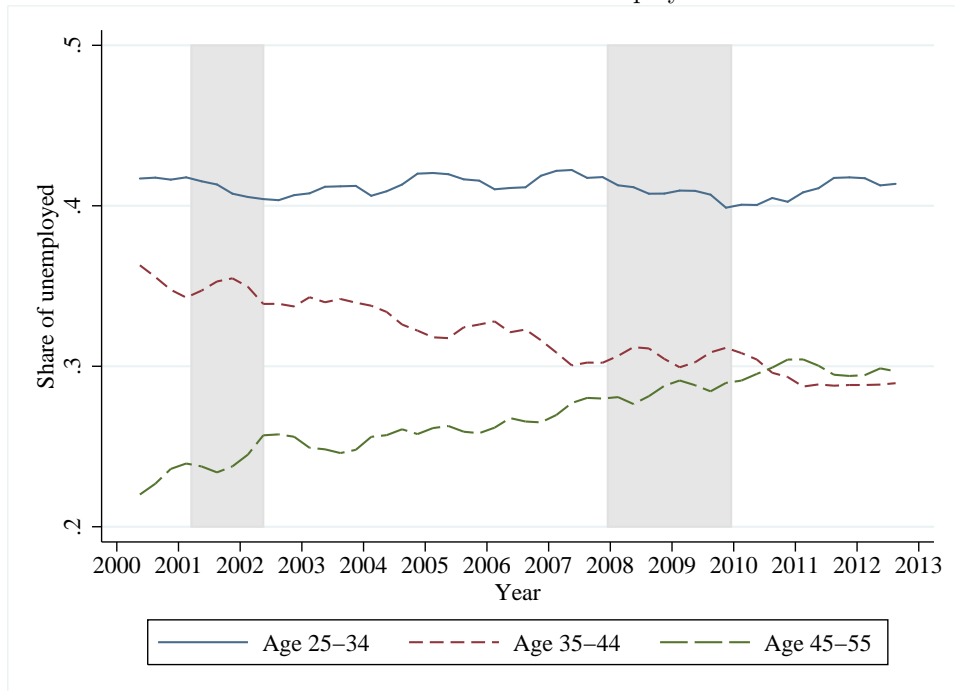


APPENDIX FIGURE C1: LONG-TERM UNEMPLOYMENT BY AGE

Panel A: Long-term unemployment share



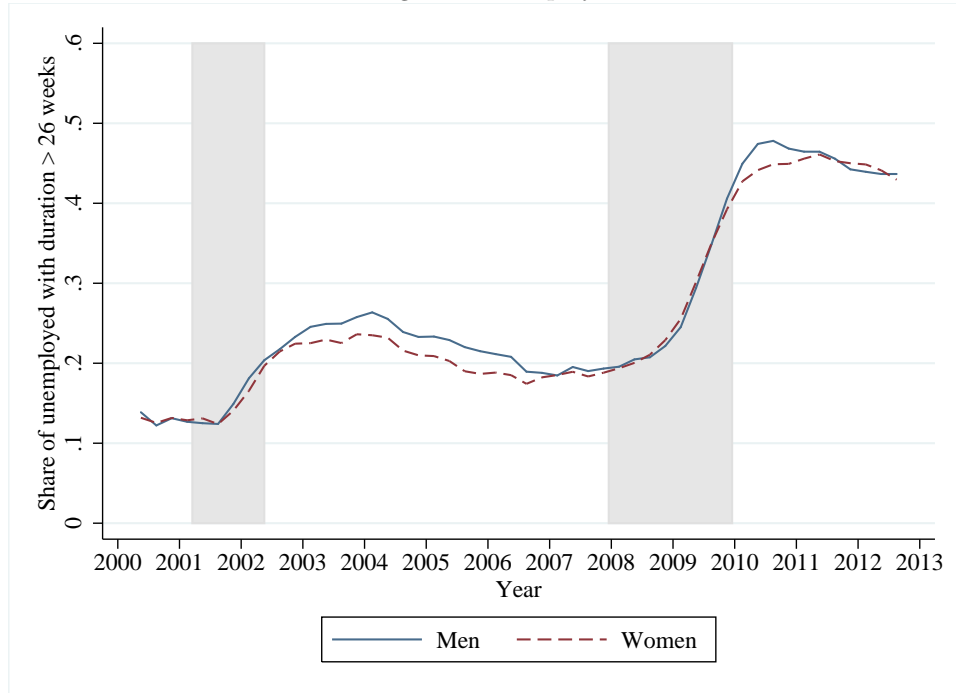
Panel B: Relative share of unemployed



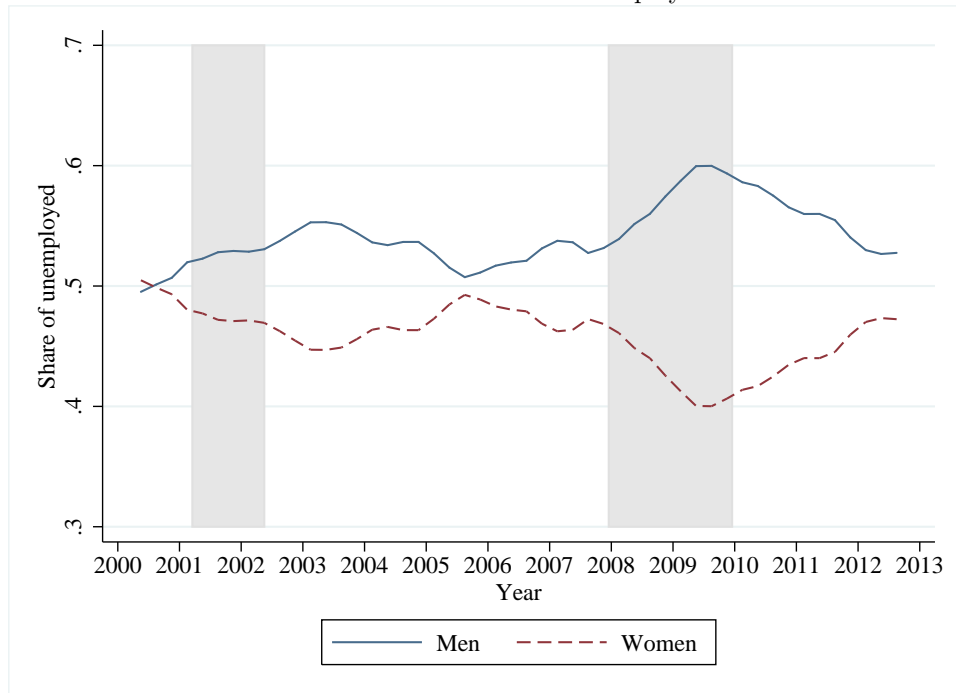
Notes: These figures use data from the CPS. See notes to Figure 2 for more information.

APPENDIX FIGURE C2: LONG-TERM UNEMPLOYMENT BY GENDER

Panel A: Long-term unemployment share



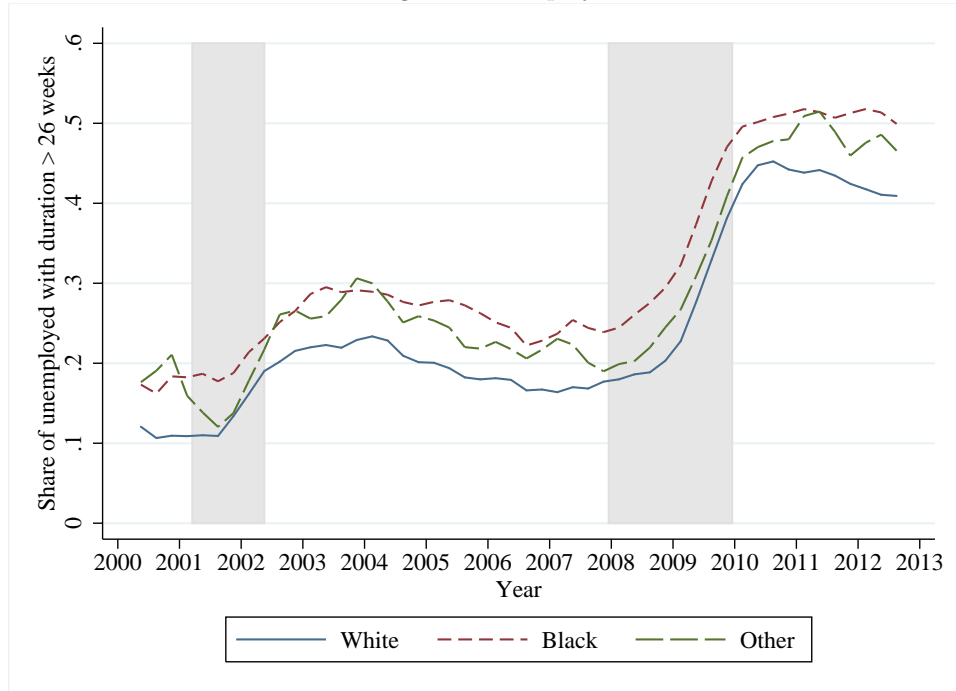
Panel B: Relative share of unemployed



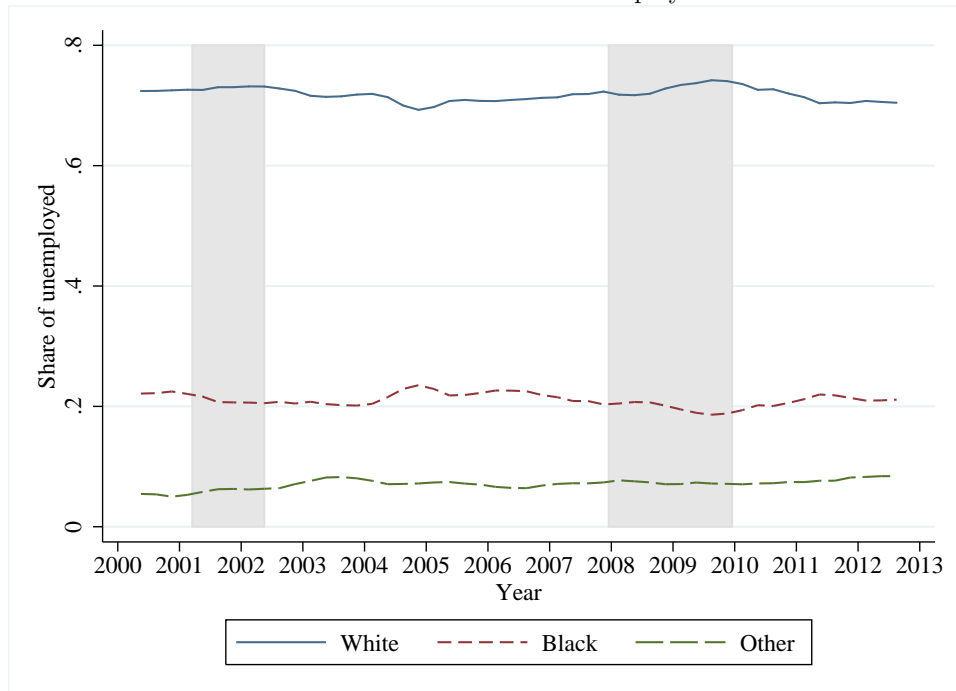
Notes: These figures use data from the CPS. See notes to Figure 2 for more information.

APPENDIX FIGURE C3: LONG-TERM UNEMPLOYMENT BY RACE

Panel A: Long-term unemployment share



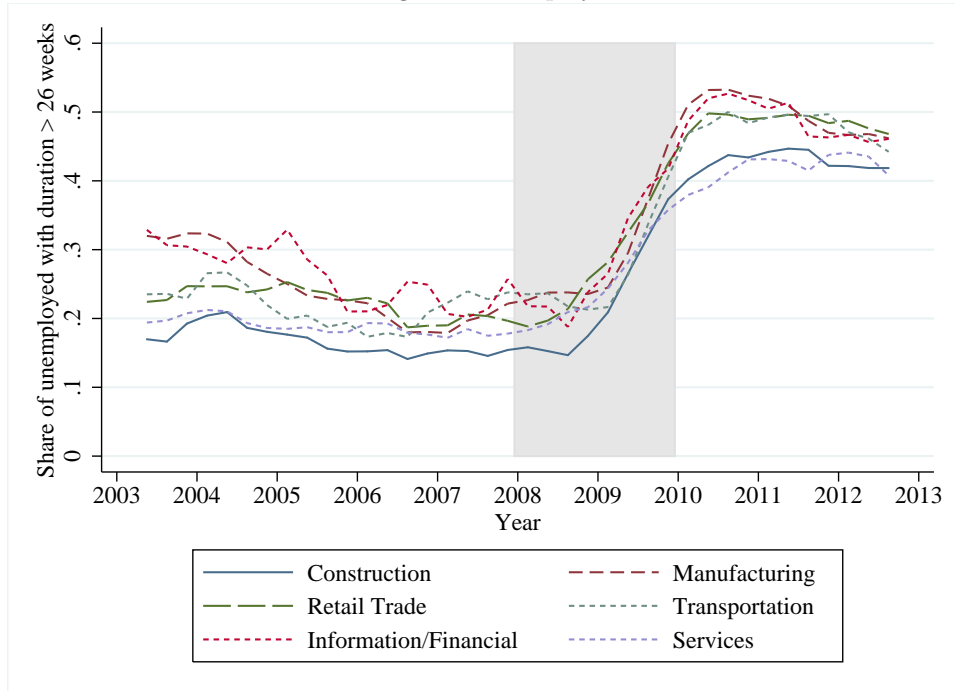
Panel B: Relative share of unemployed



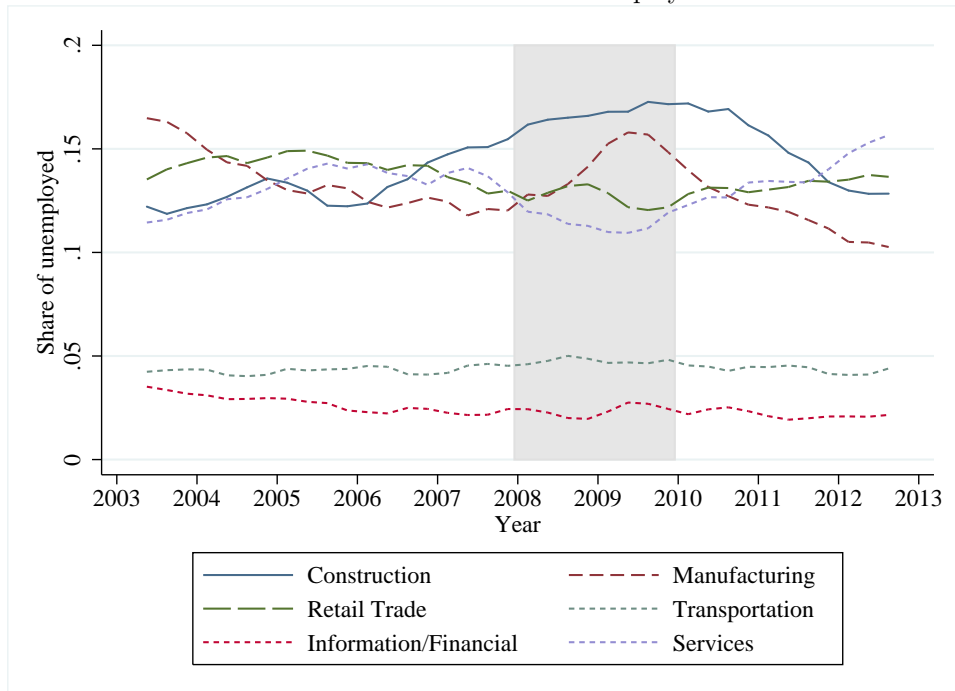
Notes: These figures use data from the CPS. See notes to Figure 2 for more information.

APPENDIX FIGURE C4: LONG-TERM UNEMPLOYMENT BY INDUSTRY

Panel A: Long-term unemployment share



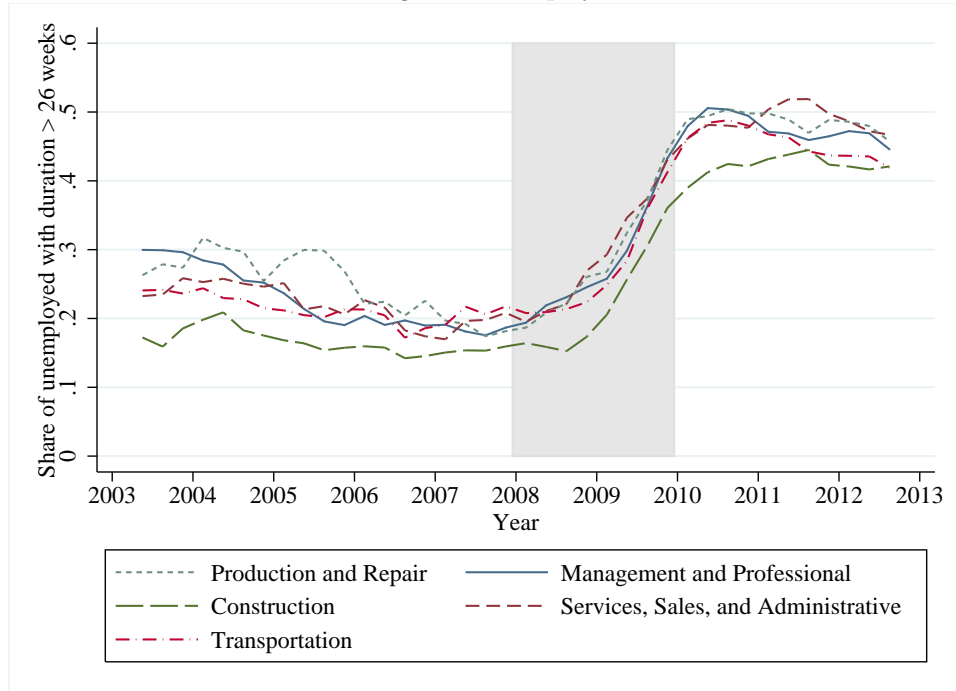
Panel B: Relative share of unemployed



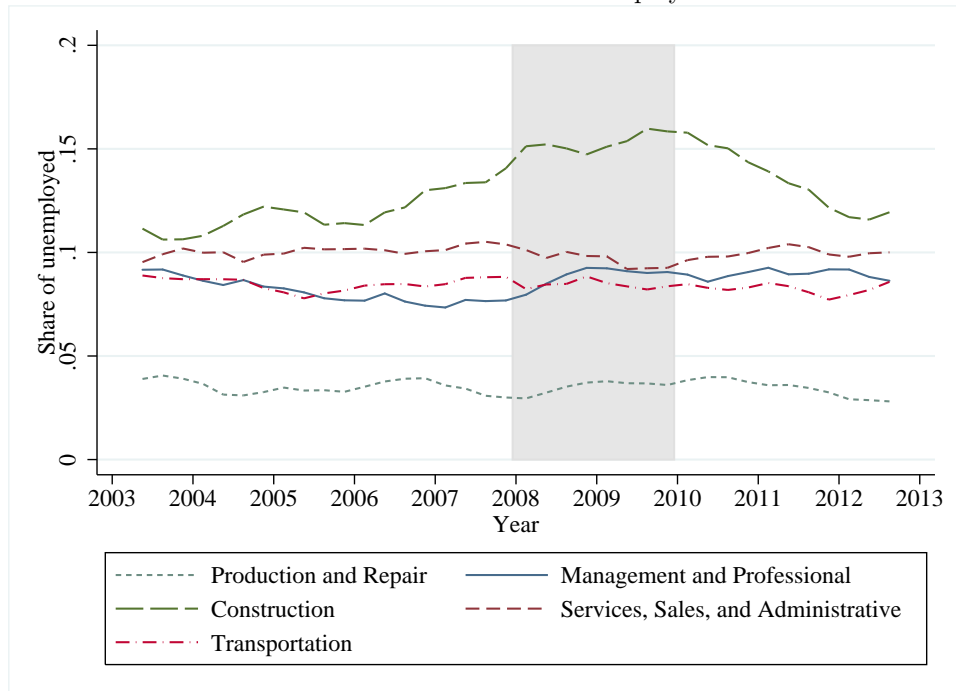
Notes: These figures use data from the CPS. See notes to Figure 2 for more information.

APPENDIX FIGURE C5: LONG-TERM UNEMPLOYMENT BY OCCUPATION

Panel A: Long-term unemployment share



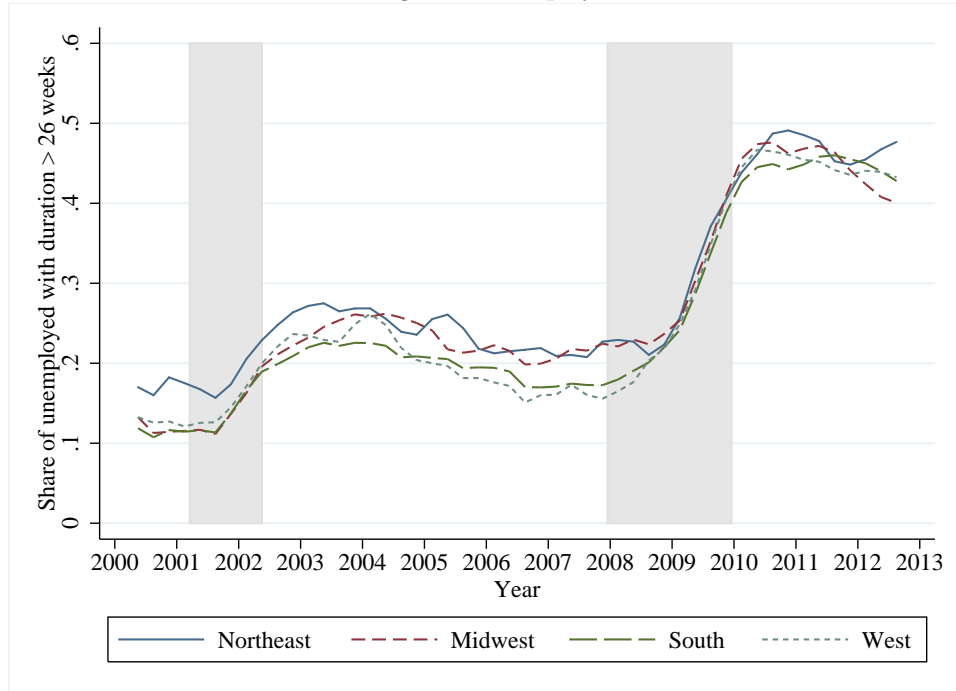
Panel B: Relative share of unemployed



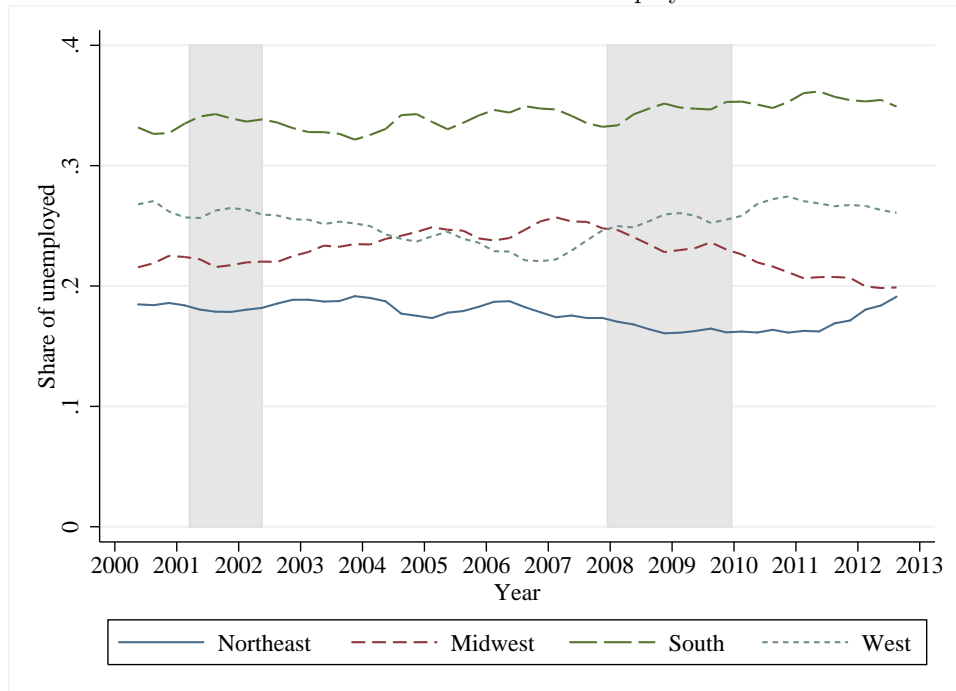
Notes: These figures use data from the CPS. See notes to Figure 2 for more information.

APPENDIX FIGURE C6: LONG-TERM UNEMPLOYMENT BY REGION

Panel A: Long-term unemployment share



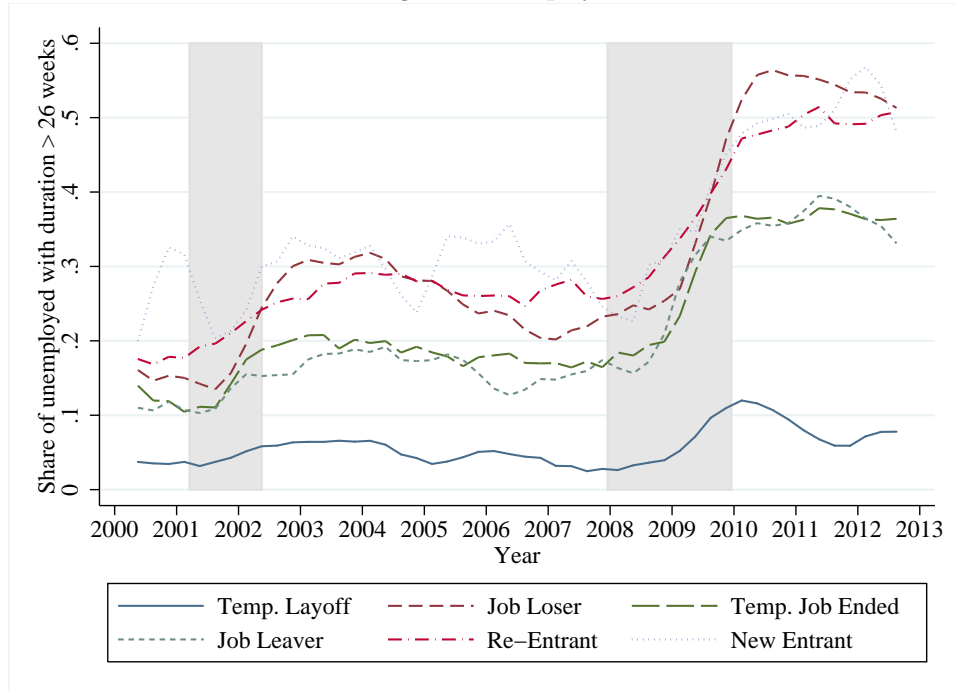
Panel B: Relative share of unemployed



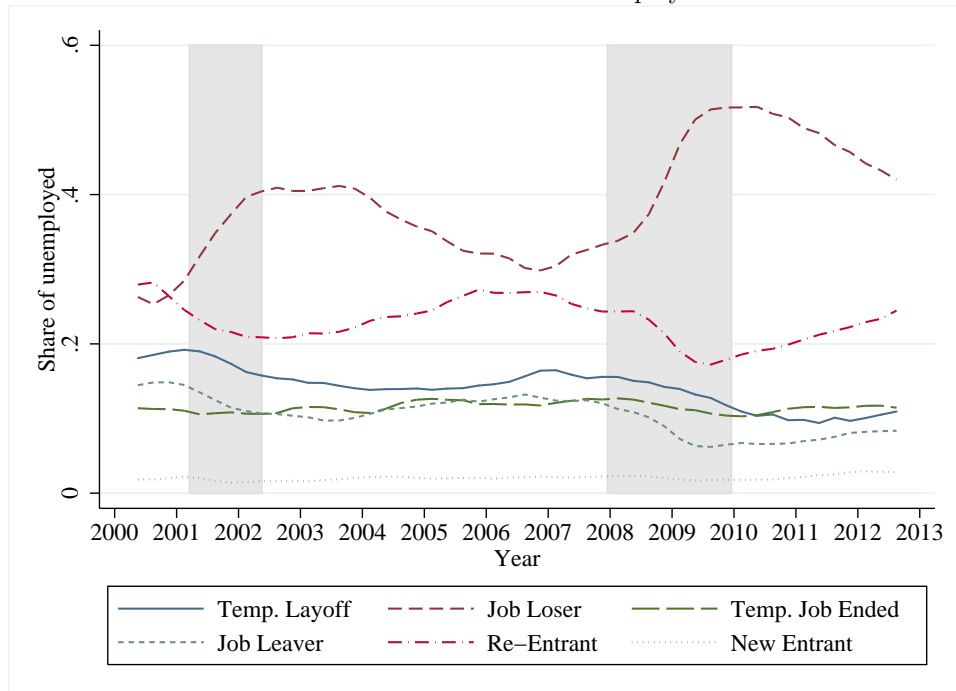
Notes: These figures use data from the CPS. See notes to Figure 2 for more information.

APPENDIX FIGURE C7: LONG-TERM UNEMPLOYMENT BY REASON FOR UNEMPLOYMENT

Panel A: Long-term unemployment share



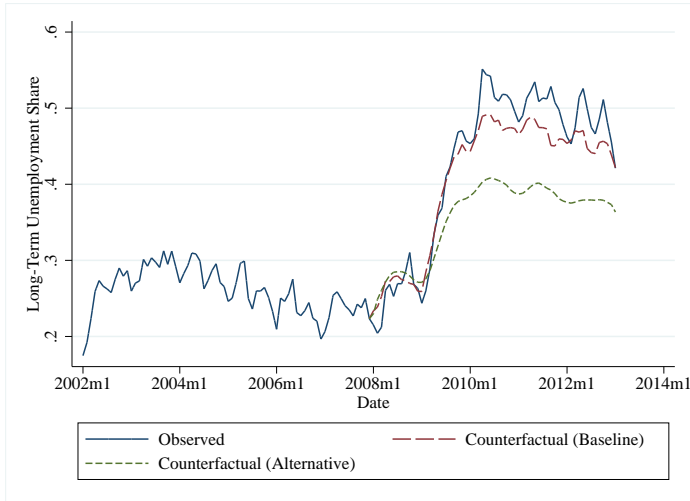
Panel B: Relative share of unemployed



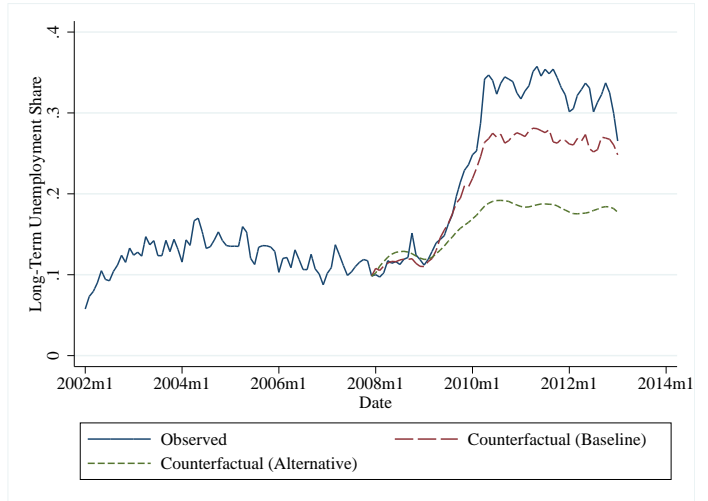
Notes: These figures use data from the CPS. See notes to Figure 2 for more information.

APPENDIX FIGURE C8: MODEL PREDICTIONS IGNORING CHANGES IN $N \rightarrow U$

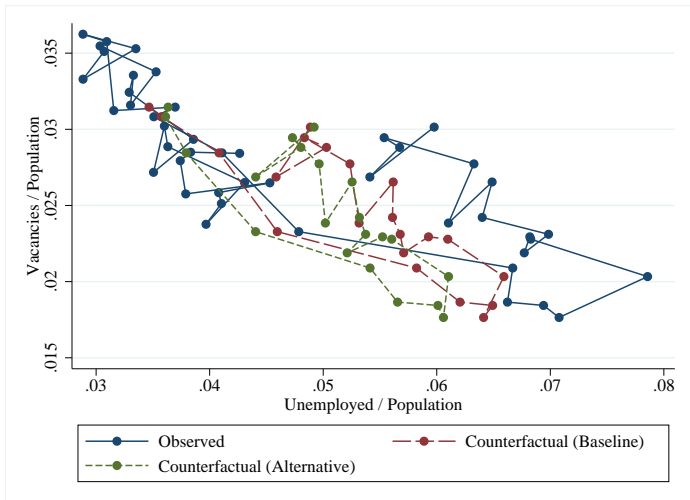
Panel A: Long-Term Unemployment (> 26 weeks)



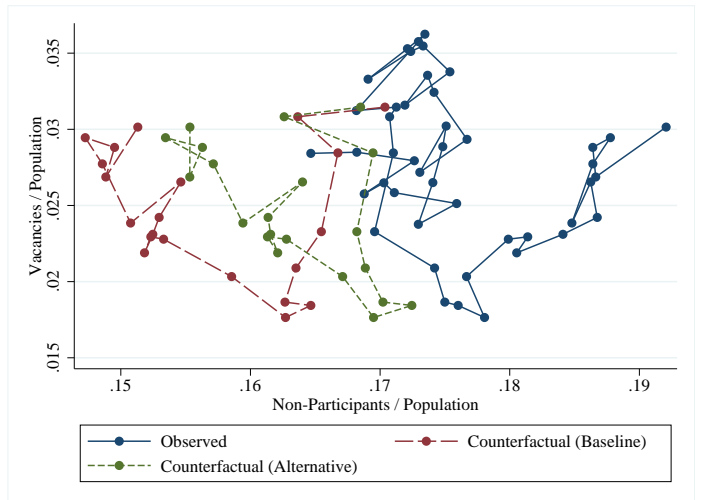
Panel B: Long-Term Unemployment (> 52 weeks)



Panel C: Beveridge Curve



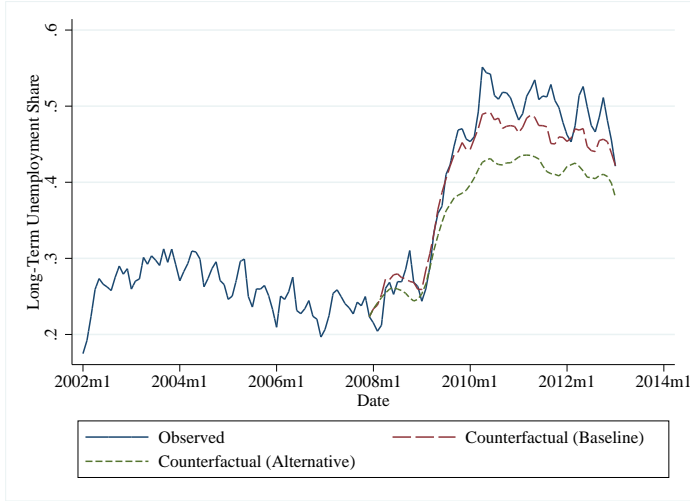
Panel D: Model Predictions for $N - V$ Curve



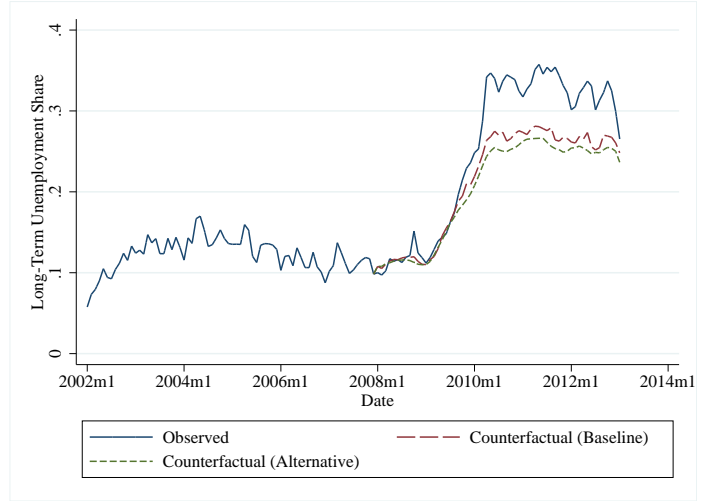
Notes: These figures use data from the CPS and JOLTS. See main text for more details on model calibration.

APPENDIX FIGURE C9: MODEL PREDICTIONS IGNORING CHANGES IN $U \rightarrow N$

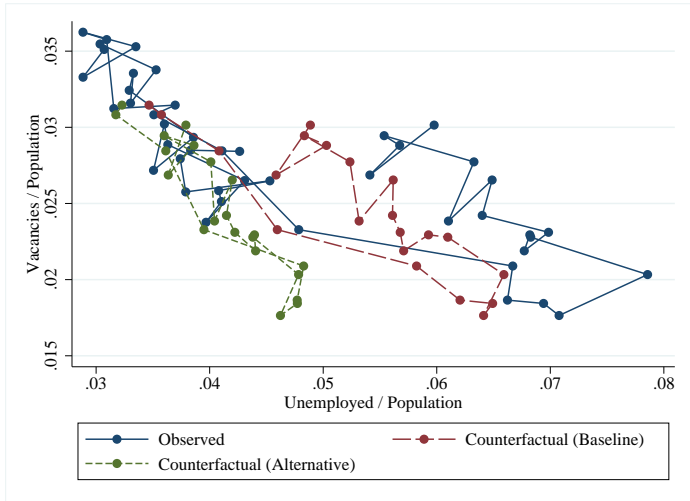
Panel A: Long-Term Unemployment (> 26 weeks)



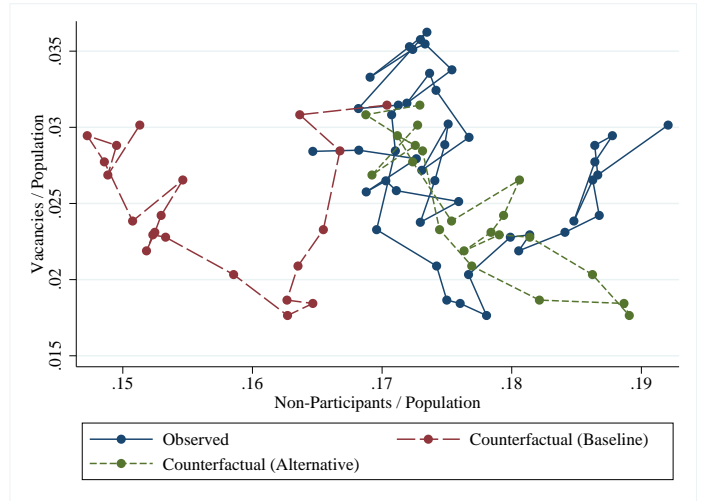
Panel B: Long-Term Unemployment (> 52 weeks)



Panel C: Beveridge Curve



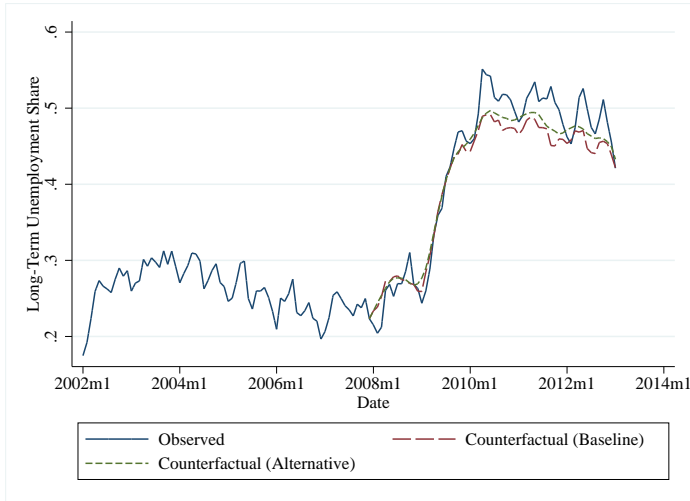
Panel D: Model Predictions for $N - V$ Curve



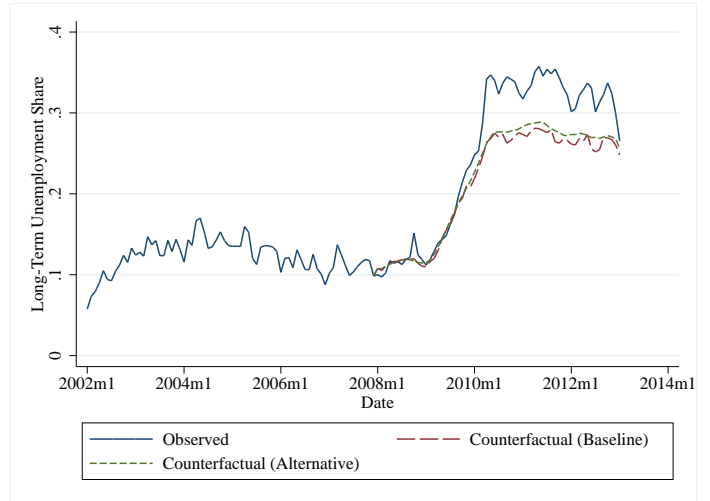
Notes: These figures use data from the CPS and JOLTS. See main text for more details on model calibration.

APPENDIX FIGURE C10: MODEL PREDICTIONS IGNORING CHANGES IN $E \rightarrow N$

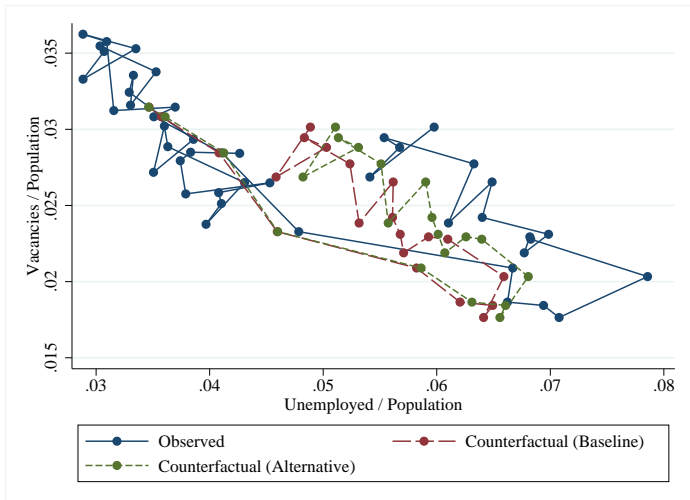
Panel A: Long-Term Unemployment (> 26 weeks)



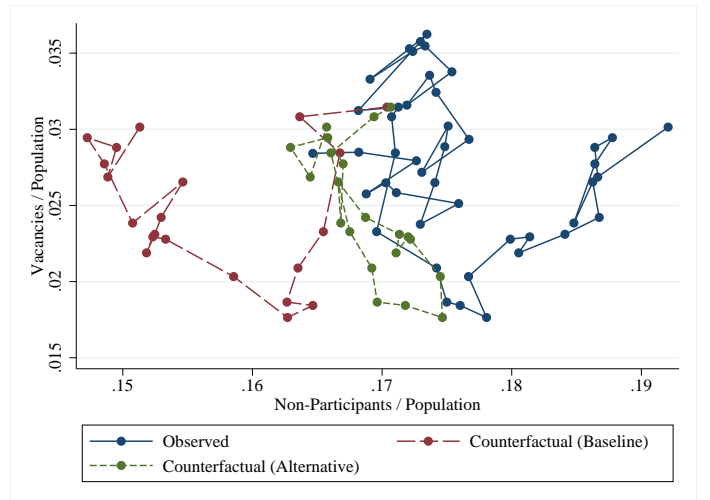
Panel B: Long-Term Unemployment (> 52 weeks)



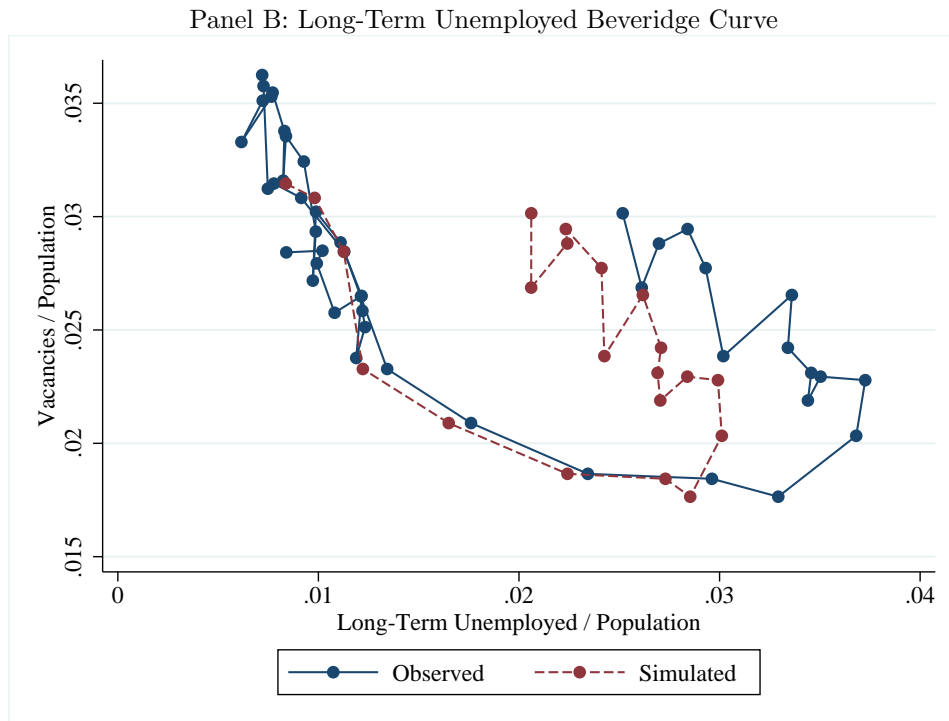
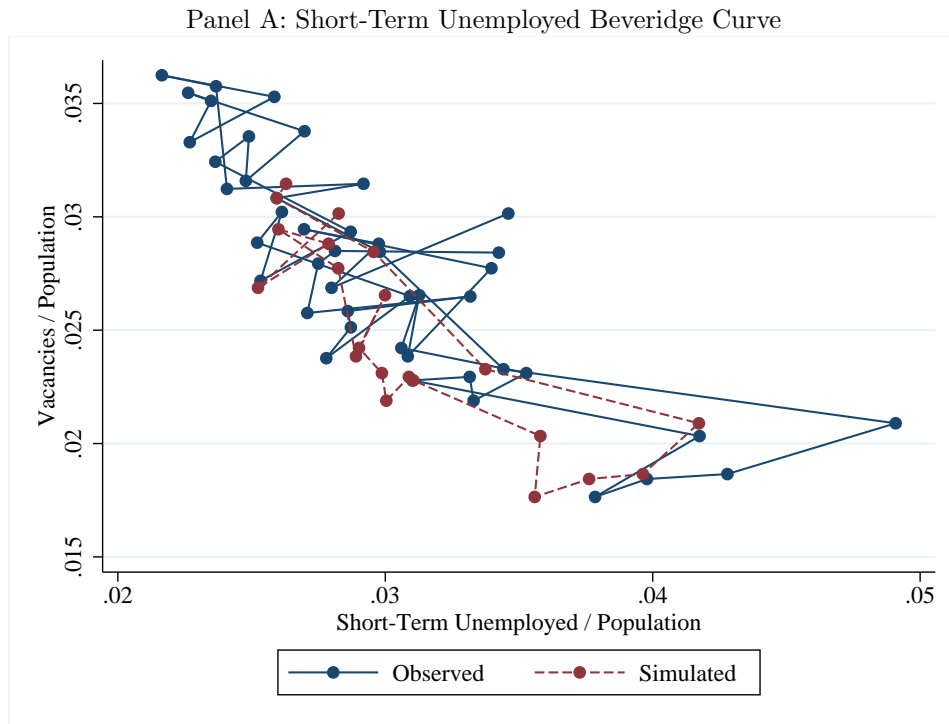
Panel C: Beveridge Curve



Panel D: Model Predictions for $N - V$ Curve



Notes: These figures use data from the CPS and JOLTS. See main text for more details on model calibration.



Notes: These figures use data from the CPS and JOLTS. The Short-Term Unemployed Beveridge Curve uses the unemployment rate for individuals who have been unemployed less than 26 weeks; the Long-Term Unemployed Beveridge Curve uses the unemployment rate for individuals who have been unemployed for more than 26 weeks. Both unemployment rates and the vacancy rate are defined relative to the total population (labor force + non-participants). See main text for more details on model calibration.